

Brixworth Bulletin

Including Draughton, Hanging Houghton and Lamport

Issue No.12, March 2007

BRIXWORTH'S NEW POLICE STATION



L to R: Sgt. Mike Grady, PCSO Jemma Simkins and PCSO Glyn Lewis

During the Parish Council meeting held on the 19th December 2006, Chief Inspector Tresias, responsible for delivering Safer Police Community Teams throughout the County, reported that the local community team had to move from Spring Hills twelve months ago, due to high rental charges and are temporally based at Moulton Park Industrial estate, which is unsatisfactory considering the area that has to be covered. The team would like to return to the area, in particular to Brixworth. Sgt. Grady had found a suitable location at Catherine House, Old Harbrough Road, Brixworth and although the Police and D.D.C. would fund £12,000 towards start-up costs, equipment etc. they hoped the Parish Council would contribute £3,000 per year towards the rental costs. The benefits to the village would include improvement to the visibility and presence of police officers, either on foot or in a car, as anti social behaviour is a concern to villagers. The office would not be open to the public, but there would be a dedicated line, with answer phone, for parishioners to ring.

The Parish Council resolved to support the local Safer Community team for the next financial year by funding a £3,000 contribution to the rental cost for this office. This amount would need to be added to the budget and precept for next year.

Sgt M Grady, two police officers, two PCSO'S and the specials will be based there, when the office is opened at the end of February 2007. The office is approximately 600 square feet and Catherine House overlooks the A508.

Harvey Fox



Letter from the Chairman of Brixworth P.C.

Those of us who have lived in the village some years may remember the Police Office we once had in Stannards Way opposite the Village Hall. This closed many years ago and it would be fair to say that most villagers thought we would never have an opportunity to have a police office in the village ever again. Even the Spring Hill Farm police office has closed and we are at present served by police based in Moulton Park.

Your Parish Council has been most concerned about this, especially as the recent Parish Plan questionnaire showed us that your greatest concern was antisocial behaviour and wanting a greater police presence in the village. Initially there seemed no way to secure this as sufficient police funds are not available.

Your Parish Council has formed a partnership with local police officer Sgt Grady, and with the additional help of Chief Inspector Tresias, police funding has now been made available. Although substantial, it is not quite enough to ensure a police base in the village. To win the police presence you said you wanted in the village, the Parish Council has made a one-off financial contribution and we have secured a new Police Office for Brixworth. In principle it can be argued that the police should pay for their own

facilities, but unless we showed some flexibility we would simply not be able to get the extra police presence you asked for. We will review the situation again in twelve months time.

As the police based here will be out and about and not staying indoors, they have agreed to set up a number of surgeries in the village throughout the year so residents more easily get to know their local officers and have an opportunity to express any worries or concerns. A further benefit is that police will be continuously travelling to and from their office leading to a greater police presence on the streets of Brixworth and we hope, a quicker response time.

And by now, some of you will be saying "What's it costing me?" It will be just about 50p per person for the whole year! It's my opinion that if this delivers the benefits we seek, our support of the police in this way will be an outstanding bargain for the village and we must thank Sgt Grady in particular for his hard work and persistence in helping to make this partnership possible.

Ian Barratt

Chairman, Brixworth Parish Council

Sergeant Mike Grady has written a letter to the people of Brixworth, to be found on page 4, in which he reports on the progress of crimes contained in previous issues of the Bulletin.

A WHITE NATIVITY A SPRING SCENE IN BRIXWORTH

– Before the snow arrived!



A WHITE NATIVITY

Around 300 people came to see Brixworth Christian Fellowship's outdoor nativity on the 17th December. Once again there was the traditional nativity scene with a host of angels, a flock of shepherds and rather more than three kings – plus a stubborn donkey that got so far before refusing to move. But everyone agreed that it all went very well, especially when it began snowing in the final carol. The snow machine was a late addition to the scene, being paid for by a kind donation from a friend of the church and it certainly added to the atmosphere. A cameraman from Anglia Television was also present to record the occasion, with the result that Brixworth had a 20 second slot on Anglia News the next day.

Thank you to everyone who helped or took part on the day and made it such a success. We are already looking forward to the next one, Christmas 2007. Maybe it will snow for real then.

Ian Rees



Jane Neill

Cloud nine holidays

Door to Door Coach holidays
& breaks for the over 50's

For a **FREE** copy of our 2007 colour brochure call **FREEPHONE**

0800 345 7575

Monday-Friday 9.00am-17.00pm

April & May Holidays

9th April 2007 Tenby 5 Days H/B **£209**
13th April 2007 Dutch Bulbfields 5 Days **£325**
30th April 2007 Eastbourne 5 Days **£219**
30th April 2007 Shanklin 5 Days **£225**
05th May 2007 Torquay 7 Days **£295**
13th May 2007 Newquay 7 Days **£319**
27th May Killarney 7 Days **£439**

For more holidays please call for our colour brochure

**Free taxi
service**

**All rooms
en-suite**

**Fully
escorted**

**No Feeder
Coaches**

87/89 St James Mill Road, Northampton, NN5 5JP
All holidays include excursions

Helen West Jeweller

Individually Designed,
Gold and Silver Gem set jewellery

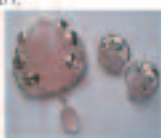
Open Wed to Sat, 10am-5pm

1a Kennel Terrace, Brixworth.

Northampton NN6 9DL

Tel: 01604 882755

www.hwestjeweller.co.uk



GLAM ROCK 50th BIRTHDAY BASH



A 'Glam Rock' night was held on the 8th December 2006 at Brixworth Sports Pavilion to celebrate several 50th birthdays. It proved to be a highly entertaining evening with the majority of people dressing up. Live music was provided until 11.45 pm by a band known as 'The Platforms'.

Organisers would like to thank everybody for making the night so successful. After all of the

expenses were paid we were able to give a donation to Phil, Beth and Ellis which was greatly appreciated. Phil has expressed his sincere thanks to everyone concerned.

It has also been brought to our attention that concerns have been raised regarding the noise levels that night and we would like to express our apologies for any inconvenience caused.

Steve and Jane Cochrane

CONTACT DETAILS	
Editor: Harvey Fox	880337
Sports Editor: John Blason	880229
Advertising Manager: Sue Verallo	881422
Advertising Design: George Hammerschmidt	880212
Distribution Manager: Jane Neil	880616
Treasurer: Sheila Jenner	881173
Postal address:	
The Pound House	
Harborough Road, Brixworth NN6 9BX	
e-mail: brixworthbugle@aol.com	

INDEPENDENT FAMILY RUN FUNERAL DIRECTORS



*Providing a Complete Funeral Service on a personal Basis
Serving the County's Towns & Villages*

Northampton / Earls Barton

(01604) 811129

RAY BELL SKIP HIRE

Part of Ray Bell & Sons Surfacing Ltd.

- SKIP HIRE
2-20 cubic yards from £70
- LOOSE AGGREGATES
1 - 3 tonne loads from £35.00 per tonne
3 - 5 tonne loads from £30.00 per tonne
- BUILDING SAND, SHARP SAND, BALLAST, MOT, & 20mm GRAVEL
- GRAB HIRE NOW AVAILABLE

*Minimum delivery - 1 tonne. Very competitive rates.
Delivery free locally. £5 out of town.
Credit cards welcome*

Tel: 01604 883688; Fax: 01604 883533
Mobile: 07730 657252

"I Hate Computers!"

If you feel this way why not let me sort out your computer problems. I can come to your home or business and sort out your computer/network/broadband problems for a very competitive price (with no-lix no-fee*). My 20 years' experience means I can easily sort out your viruses, spyware, email, slow or freezing systems and most other problems. I can also design you a website. Check my website for more details.

Don't struggle yourself - call in a professional!

Microsoft
Certified Partner

01604 880981

Alan Howarth Computer Support Ltd

* See Website for Details

www.ahcomputersupport.co.uk

email: alan@ahcomputersupport.co.uk

ACTive

PERSONAL TRAINING
FITNESS CONSULTANT, SPORTS THERAPY
PILATES INSTRUCTOR



HOW ARE YOU FEELING?

Do you need the motivation to lose weight, tone up & get fitter?
Without the hassle of travelling to a gym?

**TRY A PERSONAL TRAINER OR
JOIN ONE OF OUR POPULAR
FITNESS CLASSES IN
BRIXWORTH**

DAY	TYPE	VENUE	TIME
Monday	Circuits	Village Hall	7.00 - 8.00
Monday	Circuits	Village Hall	8.00 - 9.00
Weds.	Pilates	The Centre	6.15 - 7.00

Classes are mixed and for all levels of fitness.

PLEASE RING FOR FURTHER INFORMATION.

Tel: 01604 880126
Mobile: 07732 165546
e-mail: info@act-ive.com

the village dental practice

Visit your local friendly dental team
for a healthy mouth and
smile with confidence.

All patients are warmly welcomed.
Please 'phone or call in for a free consultation.

opening hours:

monday & friday 8.30 - 12.00; 1.00 - 4.30
tuesday & thursday 10.00 - 1.00; 2.30 - 6.30
wednesday 8.30 - 12.30; 1.30 - 5.30

spratton road, brixworth
telephone 01604 880293

Letter from Police Sergeant Mike Grady

Firstly, I would like to introduce myself and your local policing team.

I am Police Sergeant Mike Grady, I have served as an officer for 19 years.

The team consists of PC Paul Houghton Draeger, PC Gary Wright, PCSO (Police Community Support Officer) Jemma Simkins and PCSO Glyn Lewis.

Paul and Jemma have responsibility for Brixworth. Gary and Glyn have responsibility for Draughton, Hanging Houghton and Lamport. We have 42 parishes to cover in total.

We have 2 Special Constables, Simon Humphries and James Abel who dedicate their free time to policing Brixworth and the area most Friday nights.

We are your Community officers and will deal with local offenders and tackle the longer term issues. 24/7 cover is provided by Incident Resolution officers based at Northampton and Towcester – these are the staff who will attend emergency calls and those requiring a more immediate response. We are all supported by a Criminal Investigation Unit and Prisoner Investigation Unit – there are of course many other specialist units who offer further support.

We are currently based on the Moulton Park Industrial estate which is unsatisfactory considering the area we need to serve. Through lengthy negotiation we have managed to secure funding from the local parish council and hope to move into Brixworth by the end of February. We are very pleased to have developed a good relationship with the Parish Council and their agreement to contribute to our office in Brixworth is much appreciated – without your help it was very unlikely that we could have made the move. This move will shortly be followed by a launch of Safer Community Team status, which will see us “red circled” to the area and the addition of another PCSO. Although the new office won’t be a police station as such, we will be more accessible and visible.

Before I came to the area there were 4 robberies in Brixworth (July, October, November and December 05). I can report that unfortunately the robbery at Troops, along with second one at the COOP remain undetected. The first robbery at the COOP (July 5) has been detected although we still await a court result due to continual adjournments. Regarding the burglary at the George Public House, the offender appeared in the Crown Court in June 2006 and was dealt with, for a number of offences and was sentenced to prison for 4 years. (See reports in previous issues of the Bulletin)

At the end of the school summer holidays in 2006 there was a large barn fire off Froghall – the cause of the fire was inconclusive and many rumours were heard suggesting local youths may have been responsible. There was little evidence to support this; we did put the offence to one youth in custody but it was denied.

Another notable event during 2006 was when about 30 car aerials were removed from vehicles in the village, 2 youths were captured on CCTV but the reproduction was so poor no identification could be made and these offences remain undetected.

In August youths entered the Community Centre store and pulled out the village Xmas decorations and destroyed them. One 18yr old male is awaiting sentence at court in relation to this.

In September, 3 young men attempted to axe their way into the back of the COOP. An adult male received a caution for the offence, a 17yr old youth from the village was convicted at court and received a 4 months referral order, the 3rd male is currently on conditional bail to court.

Overnight 6-7th October 2006 saw a spree of criminal damage, theft and graffiti, in all about 20 offences. Three youths (13, 15 and 17yrs) have been arrested and dealt with over these crimes. The 2 younger boys were dealt with by the reprimand clinic whilst the 17 yr old appeared in court before Xmas, entered a guilty plea and was convicted. He was sentenced to a 9months referral order – despite the referral order’s intention it does not allow the offender to put right the damage caused.

During November there were a few offences of criminal damage on Spratton Rd, a local 17yr old female is on bail for these offences – the same female already has a 12month supervision order and is being dealt with for other offences of theft and damage.

The law, human rights and the data protection acts prevent the naming of youths involved in criminality. I had hoped that those responsible for the graffiti would voluntarily assist in a clean up but it was left to a few good natured community minded individuals who I helped on Saturday 20th January 07 tidy up the Spratton Rd area. Many thanks to Matt Cox, Frank Wiig and Ryan Tester who all gave up their precious time and spent a few hours working very hard. I make it very clear that Ryan was NOT involved in the offence and willingly helped to tidy up his village.

I am conscious that the centre of the village is made an uncomfortable area to visit due to a small number of youths. In relation to this we have issued 8 Acceptable Behaviour Contracts to youngsters, some have complied, unfortunately the remainder ignore their contracts and we get little support from parents. I appeal to parents of teenage children to question what their children are doing when out, when they come back smelling of alcohol and on occasion to check up on them. Brixworth is an alcohol free village, yet many youths seem able to buy/acquire alcohol and get drunk in the village – their behaviour of course deteriorates as a result. {The 6-7th Oct is a prime example}.

There is a group in Brixworth trying to improve the village for everyone; the Brixworth Action Group meets regularly but needs a wider variety of members, so I appeal

to parents, youths, business representative and councillors to get in touch. We need to work together to make a difference.

Speeding in the village is frequently complained of. The survey completed in Froxhill Crescent, although showing some extremes, did not prove a need for action from the safety camera team or installation of cameras (85% of vehicles were below the enforcement threshold). We will be carrying out sporadic enforcement ourselves however.

It is ironic that a letter in the previous issue of Brixworth Bulletin criticised the labelling of the youth in Brixworth as YOBS and the graffiti sprayed throughout the village (photo) shows BRIX YOBS! The article in question made light of cones being placed in the road – since then a trampoline has been stolen, placed in the road at the same location which caused a traffic accident – another incident has occurred where logs were placed, again in the same location.

A frustration to us in Brixworth is the lack of involvement, interest and commitment to the village from some of its own residents. We, your parish council, neighbourhood watch, the youth club etc will do what we can but we need your support to improve the village.

In relation to effective policing, we need your evidence – on several occasions we could gain successful prosecution if witnesses would come forward, many cite fear of reprisals as a reason for not doing so. By and large this is pretty rare and if it does occur we can and will take action. Crimestoppers is always an option where you may give evidence anonymously.

My team is committed to improving the quality of life in your villages and welcome any suggestions, questions and assistance.

We do provide a regular report that is displayed both in the Community Centre and COOP, and once we are back in the village we will renew a surgery where you may come along to discuss policing issues.

Thanks

Police Sergeant Mike Grady

RED LION
Harborough Road, Brixworth
BED AND BREAKFAST
(Open all year. Single and twin rooms available, all with ensuite, televisions & tea making facilities.)
TRADITIONAL PUB FOOD
SUNDAY LUNCH: 12.00 - 2.30
LUNCHES: 12.00 - 2.00
EVENING MEALS Weds. - Sat.: 6.30 - 8.30
01604 880245



THE PROMOTION OF HEALTHY LIFE STYLE, PHYSICAL EDUCATION AND COMPETITIVE SPORT AT BRIXWORTH PRIMARY SCHOOL



There has for some time been a wide spread debate on the performance of the nation's sports teams and physical education in schools. At Brixworth Primary physical education and sport is a very important part of the curriculum. The school is fortunate in having resources and facilities to enable pupils to participate in a wide range of PE activities.

The school recognises the critical importance of teaching healthy life style through diet and regular exercise. PE lessons are about pupils being engaged in physical activity with enjoyment so that they will choose to continue taking exercise in their own time.

Brixworth Primary competes at football, netball and athletics against other schools in the area. Pupils, gifted and talented in sport, are given the opportunity to develop excellence through coaching sessions in school or at other venues in the area cluster. Coaching in football, netball and tennis have been provided for pupils this academic year with rugby coaching planned this term.

As an example of the school's participation in competitive sport, the school's football team took part with success in the South Northants and Daventry junior football finals. More recently Year 6 boys and girls competed in the Primary Schools Indoor Athletics Festival at Moulton and won the event against local schools.

Through dedication and commitment the teachers offer a wide range of sports clubs and activities for pupils both after school and at lunchtimes. These opportunities to develop sports skills and take part in physical exercise as part of children's recreation include football, netball, gymnastics, athletics, badminton, tae kwon-do and dance. By providing swimming lessons the school seeks to ensure that all pupils will be able to swim at least 25m by their final year.

Brixworth Primary promotes healthy life

styles for its pupils through enjoyable physical activity and also seeks to provide opportunities for pupils to develop their skills and aptitude in sport through competition.

David Boucher

RED LION LANDLORD



In 2006 Garry Booker became landlord of the Red Lion public house after working with his relatives Gail and Nigel Toseland who were the previous landlords.

Garry was born in Brixworth and attended local schools. The Booker family have lived in the village for several generations. Garry loves the social side of being a landlord and whilst he knows many Brixworth people, he has made many more new friends through his job. He recently visited Switzerland to visit friends he had made through the B&B at the Red Lion. Garry offers both single and double bed rooms at the B&B. The Red Lion offers great bar food and also has Sky Prem Plus on the menu. *Sue Verallo*

MJS Furnishings

For all your furniture needs

Classic English Furniture & Modern Contemporary Furniture
Quality furniture at affordable prices
Something for everyone

Regency & Georgian

Timeless & Elegant

Modern Living

Contemporary

Solid Oak

Tudor

Cottage &

Farmhouse

Open every day 10am to 5pm except Thursdays closed ALL DAY
We open Sundays 10am to 4pm
76 Artizan Road, Northampton, NN1 4HS
Telephone: 01604 620499
www.mjs-furniture.co.uk

• BULLETIN BOARD •

Brixworth History Society

www.brixworthhistory.org

Programme 2007

All meetings will be held in the Brixworth Village Hall at 7.45pm except those marked *.

Thursday 15 February	WO2 Moody	"Into the Danger Zone"
	His account of military operations in Iraq Nov 05 – May 06	
Thursday 22 March	Mick Hanzlik	"Confessions of a Master Locksmith"
Thursday 19 April	Martin Marix Evans	"Naseby Battlefield"
Thursday 24 May	Chris Blyth	"The Eleanor Crosses"
Saturday 30 June*		Day Trip to Salisbury
Thursday 19 July – Monday 23 July*		Trip to France
	Visit the Chateaux & Wines of the Loire Valley	
Thursday 16 August	Summer Saunter	
Thursday 20 September	Geoffrey Starmer	"Technology of the Country House"
Thursday 18 October		Members' Night
Thursday 15 November	A Visit by the Pitsford Home Guard Living History Unit	
Thursday 13 December	Christmas Party	

Visitors are welcome at £3.00 per person at each meeting.

Contact: **Heather Parr** Tel. 01604 631183

STAN AND MARGARET ELDRED



Stan and Margaret Eldred will be celebrating their 70th wedding anniversary on the 17th April this year. Congratulations and love from their children, grandchildren and great grandchildren.

DDC DOG WARDEN

Following complaints by the Sports Clubs and residents, the DDC Dog Warden is patrolling the recreation grounds and playing fields in Brixworth. Any dog owner not clearing up, should their dog foul the land, could be issued with a £50 fine on the spot. If anyone knows of any offending dog owner or the time of day the dog is usually exercised, then please contact the Dog Warden at Daventry. Residents could be prosecuted and fined up to £2,000. Dog owners are reminded that they should exercise their dogs around the perimeter of the fields, not on the sports pitches.

This notice has been published at the request of the Parish Council.

Creaton in Bloom

Sunday, 3rd June 2007-01-30 Village gardens open from 1.00p.m.

BBQ on Village Green from 12 noon
Teas & Stalls

In aid of St. Michael & All Angels,
Creaton

Supported by Highgate House

BRIXWORTH NEIGHBOURHOOD WATCH

In order to be a successful committee, the Neighbourhood Watch needs the help of all residents of Brixworth to report incidents, put forward ideas or become members to cover your own areas.

To help us progress, a post box will be placed in the Brixworth Library which you can use to place your suggestions, reports of incidents, such as anti-social behaviour, litter, speeding etc. These suggestions and reports will then be collated and investigations will be carried out on the best way forward to improve the quality of life for all residents of our community.

Please make good use of the suggestion box as it is vital for all of us to be part of the aim to improve the standard of life for all our residents.

Bob Noden Chair. Neighbourhood Watch

PROPERTY MAINTENANCE and BATHROOM DESIGN & INSTALLATION

- General carpentry
- General plumbing
- Laminate & hardwood flooring
- Doors & windows



bsp
property maintenance



- Plastering, painting & decorating
- Ceramic tiling
- Kitchens & bathrooms
- Guttering & roof repairs
- Fencing

Call Bryan or Stacey on:
01604 882447 or 07941 750288

Hillcrest House | 7 Northampton Road
Brixworth | Northampton NN6 9DX

Fax: 01604 889248
email: bryan.pass@btinternet.com

PLANNING STATUS REPORT

REFERENCE NO. & DESCRIPTION OF APPLICATION	P.C. RECOMMENDATION & D.D.C DECISION
WP/2006/0171/F Sywell Aerodrome. Highway improvement works consisting of road widening and realignment of stone wall.	PC 25/4 Support for application
DA/2006/0998 CPL Fragrances, Quarry Road. Renewal of planning permission DA/2006/1086 for temporary building for storage.	PC 26/9 The Parish Council objects to this application, which does not appear to be necessary if a new storage unit is to be built. DDC Approved
DA/2006/1000 New Building Farm, Scaldwell Road. Replace a temporary dwelling with permanent agricultural workers dwelling.	PC 26/9 No Objection. DDC Approved
DA/2006/0545/F Sywell Aerodrome Ltd. Construction of surface water drainage system to serve paved runway, taxiway and apron.	PC 26/9 The Parish Council objects to this application. It would seem logical to consider the provision of a drainage system together with an application for a paved runway rather than on its own.
DA/2006/1013 42 Froxhill Crescent. Two storey extension to side of dwelling.	PC 27/9 No Objections. DDC Approved.
DA/2006/1085 20 Northampton Road. First floor extension above garage.	PC 31/10 No Objections although one Cllr wished for concerns over size of extension to be recorded. DDC Approved.
DA/2006/1104 27 Pychley Close. Two storey extension to the side.	PC 31/10 No Objections but recommendation that adjacent hedge be retained. DDC Approved
DA/2006/1154 10 Kennel Ter Conservatory to rear	PC 28/11 No Objection.
DA/2006/1168 25 Knights Way. Single storey extension to rear of building	PC 28/11 No Objection.
DA/2006/1199 8 Waterpike Conservatory to rear	PC 28/11 No Objection
DA/2006/1304 McInerney Homes Ltd. Land at Holcot Road. Demolition of existing industrial buildings and erection of 14 new dwellings with associated roadway and parking areas and garages.	PC 19/12 No Objection but Council concerned about removal of chicanes and effectiveness of new mini-roundabout.
DA/2006/1278 T K Cable Ltd., Staveley Way. Erection of 2.4m high security fencing and gate.	PC 19/12 No Objection.
DA/2006/1277 75 The Ashway. First floor extension over garage.	PC 19/12 No Objection.
DA/2006/1305 Mercedes Benz High Performance Engines, Wood Park, Morgan Drive. Temporary restaurant facility 9.6m x 24m required for 3 years.	PC 19/12 No Objection.
DA/2006/1333 11 Stonehill Way. First floor extension to side of property.	PC 19/12 No Objection.
DA/2006/1351 24 Broad Street. Ridged roof over existing rear extension. Demolition of conservatory and erection of single storey extension.	PC 19/12 No Objection.
DA/2007/0037 Hadleigh Cottage, Holcot Road. Extension to the side and rear of the property with detached double garage at the front.	PC 31/1 No Objection.
DA/2007/0044 Beech Hill, 25 Church Street. Demolition of conservatory and outhouse, construction of extension to house and new detached garage.	PC 31/1 No Objection providing materials used are in keeping with existing buildings.
DA/2007/0061 77 Northampton Road. Outline application for demolition of out buildings and erection of new dwelling, alteration to vehicular access.	PC 31/1 No Objection providing stone wall on Northampton Rd. side of property is retained.
DA/2007/0065 Land at rear of 24 Northampton Road. Three terraced dwellings and vehicular access onto Broad Street.	PC 31/1 No Objection providing materials are in keeping with existing terraced properties in Broad St.
DA/2006/1304 McInerney Homes, Land at Holcot Rd. Amended plans to permit footpath 1.8m wide on Holcot Rd. side of the development.	PC 31/1 No Objection.

ONE UP - ONE DOWN



At last the changing rooms have been assembled on the Ashway playing fields. After planning delays which rivaled a major airport extension, the building was erected within a week.



The old pottery factory on the Holcot Road, near the fire-station, was demolished at the beginning of February to make way for 14 residential units.

RIGIFLEX

Peter Garley told the Bulletin that Rigiflex Ltd would be moving to the old Ibex barns within three weeks. The move has been very expensive, but they have ensured that their workforce remains in Brixworth. Some machines have been moved into the new premises and the connections for the utilities are being finalized. The Bulletin plans to feature the company in the next issue.

RAYBELL & SONS SURFACING LTD

DOMESTIC & COMMERCIAL
FREE QUOTATION
NO JOB TOO SMALL

TARMACADAM,
BLOCK PAVING,
SLABBING, PATIO, DRIVES

Unit 3, The Old Brickworks, Harborough Rd., Peasford, NN6 9AA
TEL: 01604 883688; FAX: 01604 883533

The Coach and Horses

Harborough Road, Brixworth Tel: 01604 880329

a tavern of immense character and charm - over six hundred years old.

See our blackboards for freshly cooked dishes, including fresh fish dishes, available daily.

Traditional Sunday lunch served from 12 onwards.

Warm cosy lounge with blazing inglenook fire.

Bookings available for private parties

Open 7 days a week: Lunchtime: 11.00am - 3.00pm; Evenings 5.30pm - 11.00pm

See our website on "The Best of Northampton Restaurants English"

Brixworth Landscaping

For personal service, design & creation of your ideal garden, call Matthew Cox on:

Phone: 01604 882390

Mobile: 07702 317828

82 Froxhill Crescent
Brixworth
Northampton NN16 9LN

TIME FOR YOU AND YOUR BABY



Minnie, aged 5 months

I have to confess that my experience of early motherhood, some thirty five years ago now, was not the unalloyed bliss that I had somehow expected it to be. In many ways it was a lonely, frustrating and often mystifying business – so much so that instead of enjoying every day as it came, I was in a perpetual state of longing for the next stage of development, the better to communicate with and understand the needs of my much loved but sometimes puzzling new baby. Consequently as a new grandmother, (both my daughters having produced within six weeks of each other last summer), I was anxious to explore alternative ways for my daughters and their newborns to find more fulfilling methods of mother/baby interaction, which is how, between us, we discovered the joy of baby massage.

I'd heard about the phenomenon of baby massage from a friend who had grown up in India and about how mothers there, regarded baby massage and baby yoga as an unexceptional part of their daily routine. So when I heard about classes as close to home as Brixworth, I was more than keen to 'treat' my daughters to a session with ex-nurse, midwife and health visitor and qualified baby massage instructor, Heather Pool who runs weekly classes at Brixworth Library/Community Centre as well as at Wooton and Bugbrook.

Witnessing the session of my daughters and their little ones bound together in totally relaxed loving communication can only be described as magical and yet so very simple. It brought me to the edge of tears.

As Heather says baby massage and positive touch have been practiced for centuries in many different countries and cultures. Touch is the newborn baby's first language and as such is their prime means of communication. Massage enables parents to learn about and respond to their baby's body language – allowing them to express their natural affection

and fulfilling their baby's need for physical contact. Heather says 'When you massage your baby you are able to focus on them completely, observing and interpreting their reaction. It gives parents the opportunity to strengthen their relationship with their babies. Research shows that babies who are touched lovingly cry less often and have less illness. Regular massage reduces the circulation of cortisol, a stress hormone, promoting relaxation and it also stimulates the release of the body's natural opiates – endorphins – which subdue pain and promote a feeling of 'wellbeing'.

Baby massage is simple to learn in terms of technique, requiring only basic equipment yet so powerful in what it conveys: Your love, understanding and attention. As well as helping newborns to bond and interact, massage develops muscle tone, co-ordination, suppleness and enhances the immune system, helping to increase the resistance to illness. Massage is particularly soothing during times of stress for both parent and baby.

Whilst of course, massage can be routinely practiced at home at any time, (my daughters, now convinced devotees, tell me they do it just before bedtime – I'm happy to report that all are enjoying exceptionally peaceful nights!) one of the positive benefits for new parents is that by joining a class, they get to meet other others in exactly the same circumstances.

If you would like to try a baby massage class, then get in touch with Heather Pool on 01604 881166. Heather runs 5-week courses at Brixworth at regular intervals throughout the year. The classes last one hour each and the cost of each course is £25. As Heather says 'The ultimate aim is to have fun in a small friendly group whilst learning to massage your baby. At the end of the course, you will have the confidence to continue massaging your baby in your own home'.

Paddy Fox.



Not even the recent snow daunts the progress of the yew tree planted by the Bishop of Brixworth in 2000. Just another 2000 years to go before it reaches full maturity.

Beautiful Hands & Feet

Manicure & Pedicure
Extensions & Nail-art

By Lorraine

01604 883 754
07832 133 697



IMPACT GLAZING **IG**

- Glazing Service
- Sealed Units
- Laminated & Toughened Glass
- Clear & Patterned Glass
- Mirrors & Glass Shelves
- Greenhouse Glass
- Fire Glass for Boilers & Halogen Lights
- Glass Products
- The Best Glass Cleaner
- Plastic Windows Supplied

FREE ESTIMATES
TEL: 0800 5053384
www.impactglazing.com



LETTERS TO THE EDITOR

LIGHTING OF MILLENNIUM BEACON

In the March 2006 Bulletin, there is a letter from me asking for feedback on how we could make the lighting of the Beacon on New Year's Eve a more attractive venue for residents. I also commented on the poor support that we received even though the weather was mild and dry. I did not receive one reply to this letter.

Last New Year's Eve, December 31st 2006, I lit the Beacon again and although the weather at the beginning was mild and dry, the turnout was again very disappointing at around 40 people of all ages. The gas used at the lighting was paid for by the Parish Council and refreshments (mulled wine, mince pies and lollipops for the children) and the light-sticks were all donated by a resident. The total takings for the sale of refreshments plus donations were only £24.50, all of which has been donated to the First Brixworth and Scaldwell Scout Group. This compares with £19.70, £108.00 (Tsunami Appeal) and £23.00 in the previous three years. As before, refreshments left over (and there were a lot!) were given to Boniface, Saxon House and the Scouts.

I have decided to no longer light the Beacon on future New Year Eves for mainly two reasons. Firstly we cannot count on good weather at this time of the year and secondly, it is clear and understandably so, that residents in general have better things to do on New Year's Eve. This discontinuation does not mean that I will discontinue the responsibility for lighting the Beacon on important national and local events as I have in the past, but it would be good to have somebody else younger than me in support with the possibility of taking on the primary role later. Is there anybody, male or female, interested in being involved in an enjoyable community attraction?

Yours sincerely *David Hymas*

Churchyard Maintenance – sheep?

It has been the custom for many years to use sheep for the control of grass growth in parts of the Brixworth All Saints' churchyard during the spring and summer. This practice has the advantage of not requiring mowing in areas where the use of conventional mowers is difficult because of mounds and gravestones. On the other hand sheep are no longer available in the locality; their droppings are distributed randomly, often on pathways. Additionally the ambition of most sheep is to escape. This they do, not infrequently, via gates left open – sometimes deliberately and also by their own ingenuity in finding and then enlarging any small gaps in the fencing.

Two or three kind and considerate volunteers have, for a number of years, helped in the task of mowing the grass where that is possible. More recently one volunteer has done an excellent job with a strimmer over a considerable area where mowing is not possible.

I would like to make an appeal for other people in the village – of any age or gender, to

add their help with strimmers, perhaps up to six persons would do the job, each cutting not too large an area 3 or 4 times a year. If this could be done regularly and consistently we would always have tidy surroundings to our ancient and much visited church without the aid of sheep.

I would be most grateful if potential volunteers could contact myself G.D.Grass on 01604 880712. Thank you

Dear Bulletin

Are there any other regular readers of our excellent Bulletin who are regularly amused if not slightly concerned at the growing rants of Father Watkins?

Recently we have had criticisms of lack of action on local parking and in December we had concern about the 'infiltration of atheists' on local councils. I had to check it wasn't the Readers Letters from the Daily Mail!

Of course its good that Father Watkins feels passionate about issues (I am not sure calling people 'pathetic' and 'shameful' fitted very well with wishes of a 'peaceful and blessed Christmas' in his last letter to us) but I would encourage him to perhaps get more involved and be a part of the answer rather than just talking about the problem.

We are all busy, we all have lots of commitments and we should all of course be allowed a moan every now and then. But come on Father Watkins, let's see some action too!

Ashley Riley 72 Northampton Road

EXPRESSIONS

UNISEX HAIRDRESSERS
& BEAUTY ROOM

For Hair - Chirology - Manicures - Pedicures - Waxing
also available

Massage on Mondays and Wednesday (evenings)



Our friendly salon extends a warm welcome
to you and we have the expertise to help you.

EXPRESS YOURSELF

Tel: 01604 880770

70 NORTHAMPTON ROAD
BRIXWORTH NN6 9DY

So what's the Parish Council doing about the traffic in Northampton Road? Quite a lot, as it turns out, with quite a lot of success. We know from listening to you from the Village Questionnaire that a priority for you is road safety and a way to cross this often busy road.

After making representations to the Sustainable Transport department of the County Council, I am delighted to say we have been successful in our bid for a pelican crossing on Northampton Road and this will be at no cost to the village.

What remains is a process of consultation to ensure it is placed appropriately. With the proposed new residential development on the Rigidex site and continuing encouragement for parents and children to walk to school, this decision is to be welcomed.

Your Parish Council is also concerned about parking on the corner near the butchers. In no way do we want to affect trade for the local shops, but traffic movement onto Northampton Road is often very badly obscured by parked vehicles. We ask drivers to please be considerate in their parking in this area, especially across the dropped kerb. This is often blocked by vehicles making life very difficult for those with buggies and wheel chair users. The police have agreed to make contact with inconsiderate parkers in this area. With your co-operation, I'm sure we can solve this problem without needing to even consider alternatives such as double yellow lines.

Although perhaps not so closely related to road safety, your Parish Council reflects your concern about the state of many of the verges which are being used as unofficial car parks, including parts of Northampton/Harborough Road. As these are controlled by N.C.C. we have arranged for an officer to visit the village to see what can be done to preserve these areas. *Ian Barratt Chairman Brixworth Parish Council*

Brixworth Information Service, Spratton Road, Brixworth NN6 9DS

Tel: (01604) 882355 or 889362

Old Mobiles littering up your home? Concerned about the impact on the environment when you throw them away? By recycling your old mobile equipment at Brixworth Information Service, you can dispose of your mobiles in an environmentally friendly way and help the Warwickshire and Northamptonshire Air Ambulance. You can also recycle old chargers or accessories in the same way. Money raised from recycling your old mobile phone will go direct to the Warwickshire and Northamptonshire Air Ambulance which is a voluntary organisation which requires £1.4 million every year to keep flying.

Brixworth Youth Foundation-Media Club

The planned Brixworth Media Club took a giant step nearer to reality this week with the support of Daventry District Council. The Council has agreed to fund the input of music leaders through the Corby based charity Big About Music (BAM) and the purchase of equipment to support the project.

The plan is for BAM to provide four disciplines:

- 1) Music technology, using computer software to create music
- 2) Karaoke
- 3) DJ skills
- 4) Rock school for existing young bands

The Foundation also seeks to set up a video section for anyone interested in making their own documentaries, music videos or movies.

"We aim to offer a range of opportunities to the young people of Brixworth and surrounding villages and to train them to use the equipment so they can cascade these skills out to others in the future, not forgetting of course having fun at the same time." Commented John McFadyen, Chairman of Brixworth Youth Foundation. "Having the services of BAM will certainly make things far more professional and structured" he continued.

The Foundation is now seeking volunteers with an interest in music or video and anyone interested in becoming a member. Contact John on 01604 889135 or 07913 110934 for further details.

G.HAMSON & SON

GARAGE SERVICES

Customer Breakdown Service
General Repairs and Servicing of Cars and Commercial Vehicles
Vehicle Steam Cleaning and Wax Oil Treatment
Suppliers of Pre-packed Solid Fuel
Air conditioning service now available

CLASS 4 & CLASS 7 M.O.T. TESTING

Harborough Road Garage, Brixworth
Telephone: 01604 881098



The Human Mechanics



Osteopaths can be thought of as human mechanics. With four years' training, we are specialists in understanding how the various parts of the body work together. Many people think we only treat back pain and sciatica, but in fact we treat the entire body - muscular strains, trapped nerves, shoulder, elbow, hip, knee and foot pain, headaches, neck injuries etc.

Helen Mathieson is the owner and has worked in Brixworth Osteopathic Clinic since it opened in 2000. Sam Ryall joined the practice in 2003 and has experience in Cranial Osteopathy, a particularly effective form of treatment for babies. In August, we were joined by Cheryl Staikov who also treats babies.

Each consultation costs £30, with patients typically achieving 90% relief of symptoms within 3-5 sessions. We receive many patients through GP referral and as members of the General Osteopathic Council, we are accepted by all major insurance companies. For further professional advice,

01604 889241

Brixworth Osteopathic Clinic
2 Church Street, Brixworth

BRIXWORTH JUNIORS FC SECRETARY POSITION

A volunteer is sought to assist in the running of our club which provides a worthwhile service to the community. The person will need to attend 1 meeting per month at the Pavilion and a Northampton & District Youth Alliance Managers/ Secretaries meeting approx. 3 times a season between August and May at a venue within the town, in the company of the club chairperson. Other duties will involve cascading any news, procedural changes etc. to team managers/coaches as and when they happen, which is probably once a week. A PC is beneficial and full training & assistance will be provided. **Contact Dave Coleman, Chairperson, Brixworth JFC on 01604 882219 for further details.**

SNOWMAN & 'WESTIE'

8th FEBRUARY - KENNEL TERRACE



Brixworth Parish Council Grants awarded on 23rd January 2007.

Brixworth Travel Club - Financial Support to subsidise the hire costs for providing a minibus service to and from Brixworth to local villages and towns.

Grant sought: £600. Grant awarded: £600

Brixworth History Society - Financial Support to assist in making former Uplands building secure, whilst converting it into a museum.

Grant sought: £13,800. Grant awarded £925.

Brixworth Junior Football - Financial Support to Junior Football Club.

Grant sought: £250. Grant awarded £250

Brixworth Cricket Club - Financial Support to assist in purchasing equipment for the junior section, coaches training courses and cost of repairs to the club's sightscreens
Grant sought: £1,000. Grant awarded £925.

The Parish Council have altered the dates for the next Special meetings to consider grant applications. The next closing date for grant applications is 31st March 2007. Application forms are available from the Clerk, Tel No: 881243 or e-mail pc_brixworth@daventrydc.gov.uk Next two special council meetings will be held in April and November 2007.

HANGING HOUGHTON AND LAMPORT NEWS

The development of the Clint Hill Farm site should commence soon, the site has been purchased by a builder from the Coventry area and we expect that site clearance will get under way in the near future.

The long standing problem of the car parking for the Manor Walk residents will hopefully be solved once the site has been fully developed, DDC have agreed to adopt the new roads once they are completed.

The Lamport traffic speeding problems continue and the parish council are hoping to get the police to use mobile cameras in the village to catch offenders.

Work has commenced on the movement of the Hanging Houghton electricity substation at the entrance to the Croft, so we can expect a power cut of about an hour in the next few weeks.

Sue and David Bayes who have lived in Hanging Houghton for over 20 years are planning to move to France within the next few months. I am sure that we all wish them good luck in their new venture, or should that be adventure, in France and bon voyage.

Mike Philpott

COUNTRY EYE

Brian Webster has been unable to submit his regular column due to his wife's illness. We wish her a speedy recovery and hope to see Brian's column in the next issue of the Bulletin.



The Christmas Fayre held in St Catherine's was a great success. Special thanks go to Dorothy Smart and Ann Smeaton who were the driving forces behind it all. They made delicious Christmas cakes and puddings and lots of other goodies all beautifully and professionally presented. Thanks to everyone else who had a stall or served the mulled wine and mince pies or helped in any way to make the event such a success. The Church looked wonderful and the sum of almost £600 was raised.

Thanks also to everyone who helped decorate and light candles in Church for the Carol Service.

The Garden Group enjoyed their annual meal out at The Stag's Head in Maidwell. Good food, good company. Thanks to Dorothy for organizing this.

The roads into the village in all directions are a cause of great concern. In places they have become really dangerous with potholes concealed by standing water being potential hazards, especially to cyclists. The Maidwell and Draughton Parish Councils have been and still are, contacting the authorities concerned and residents of the two villages have been urged to also report the problems. The phone

DRAUGHTON NEWS

number to ring for the Street Doctor is 0845 6011113 or for Mr. Danny Brennan of the Northants Highways dept, 01604 236740.

The phone number for Mr. Robinson of Atkins Ltd, who carry out the repairs, is 01604 883400

Anne Block.

BLASONS GARAGE
AT THE HUB OF THE VILLAGE

Service



Repairs

Open: Mondays - Saturdays
Northampton Rd.,
Brixworth
Tel: 01604 880229




MYLES and SIMS
Architects

Contact us for all
your building design needs.

No fee for a
preliminary consultation.

3 Kennel Terrace
Brixworth, Northampton NN6 9DL
Tel: (01604) 880294 Fax: 881667



Looking for reliable
local legal services?

Welcome to
the partnership



borneohughesmartell
Solicitors

9 Notre Dame Mews | Northampton | NN1 2BG
Phone: 01604 624822 | www.borneohughesmartell.co.uk

KPD

BRIXWORTH'S OWN PRIVATE HIRE TAXI SERVICE
Your local taxi service to & from Northampton

LOCAL STATIONS
NORTHAMPTON, MARKET HARBOROUGH
WELLINGBOROUGH, KETTERING

LOCAL SERVICES
NORTHAMPTON GENERAL HOSPITAL
VILLAGE TO VILLAGE
CREATON .. HOLCOT .. SPRATTON & MORE

AIRPORT SERVICES
LUTON .. BIRMINGHAM .. EAST MIDLANDS .. COVENTRY ..
MANCHESTER

ALL LONDON AIRPORTS
HEATHROW .. GATWICK .. STANSTED

KPD offer a 24 hour service 7 days a week advance bookings.
Pre-bookings ESSENTIAL

web: www.kpdcars.co.uk email: kpdsales@aol.com

01604 882 798



ALL SAINTS CHURCH A.D. 680

VICAR: The Revd. A. J. Watkins Tel: 880286
CHURCHWARDENS: Mrs S. Woodhead Tel: 880158
Miss S. Jowers Tel: 880474



Sundays

7.45 a.m. Holy Eucharist (first Sunday of the month)
10.00 a.m. Sung Eucharist & Address
6.00 p.m. Evensong

Weekdays

Tuesdays 9.30 a.m. Holy Eucharist
Fridays 7.45 a.m. Holy Eucharist
For other days, see weekly sheet in Church



FROM THE VICAR

Dear People of Brixworth,

I have been much concerned about the clash of principles between Church and State in this country recently about same-sex couples adopting children. The Government is handling the matter in a very insensitive way at present which could lead people from all religious groups in this land to protest to the European Court about the intolerance of their strongly-held views.

The more liberal amongst you would undoubtedly say that what matters most for a child is the love and care on offer irrespective of the sexual orientation of the couple taking responsibility for the child. Yet in view of the normal creation process of humankind it seems inescapable to me that each of us needs the influence of both sexes in growing up in a home background even if the relationship of the two adults is somewhat stormy at times. This point is confirmed by countless secular investigations and research programmes about children and their basic needs.

However that doesn't necessarily mean that it should never be right for a same-sex couple to be allowed to bring up a child. When a close relative of the child with a same-sex partner wants to adopt it may well be preferable for the child to stay with that relative rather than be farmed out to a heterosexual couple outside the family. Obviously the matter of adoption of any child is an extremely serious and delicate process which needs very careful handling in every case.

Nevertheless the point at issue in the present dispute between the Government and religious bodies (Jews, Muslims, Christians and others) isn't whether same-sex couples should be allowed to adopt children but whether agencies with clear religious principles about adoption by same-sex couples should be allowed to have freedom of conscience and choice when it comes to placing children with couples. The attempt by many in our rather bossy government and some in other political parties to compel agencies and individuals to act against their consciences is a very serious infringement of the religious tolerance that this government claims to practice. It is yet another sign of our increasingly secular society taking an ILLIBERAL line in the name of liberality!

Yours sincerely

Anthony J. Watkins

P.S. As we approach another Lent and Easter, I have chosen a picture by the Spanish artist Diego Velazquez, many of whose paintings have been exhibited at the National Gallery until recently. Notice the strongly lit figure of Christ against an obscure background as well as the exquisite draughtsmanship of the body with the hair falling over the right half of the face and the subdued glow of the halo around the head, imparting elegance and dignity to the subject. Velazquez has captured wonderfully the redeeming power of Christ's crucifixion and the benefits on offer through His perfect body.

CALENDAR FOR LENT AND EASTERTIDE

MARCH

1st Thursday. St. DAVID. PATRON OF WALES
4th SECOND SUNDAY IN LENT. Services at 7.45a.m., 10.00a.m. and 6.00p.m.
11th THIRD SUNDAY IN LENT. Services at 10.00a.m. and 6.00p.m.
18th FOURTH SUNDAY IN LENT. Services at 7.45a.m., 10.00a.m. and 6.00p.m.
N.B. 11.00a.m. Short Service for MOTHERING SUNDAY (All ages welcome)
19th Monday. St. JOSEPH OF NAZARETH 12 noon HOLY EUCHARIST
25th FIFTH SUNDAY IN LENT (Clocks change) Services at 10.00a.m. and 6.00p.m.
N.B. 11.30a.m. PAROCHIAL CHURCH MEETING
26th Monday. ANNUNCIATION OF OUR LORD (LADY DAY) 12 noon HOLY EUCHARIST

APRIL

1st PALM SUNDAY Services at 7.45a.m., 10.00a.m. and 6.00p.m.
5th MAUNDY THURSDAY 7.30p.m. MASS OF THE LORD'S SUPPER & WATCH OF THE PASSION
6th GOOD FRIDAY 2.00p.m. CELEBRATION OF THE PASSION & DEATH OF OUR LORD
7th HOLY SATURDAY 7.30p.m. CELEBRATION OF THE EASTER VIGIL MASS
8th EASTER SUNDAY Services at 7.30a.m., 10.30p.m. and 6.00p.m.
15th SECOND SUNDAY OF EASTERTIDE Services at 10.00a.m. and 6.00p.m.
22nd THIRD SUNDAY OF EASTERTIDE Services at 10.00a.m. and 6.00p.m.
23rd Monday St. GEORGE, PATRON OF ENGLAND 12 noon HOLY EUCHARIST
29th FOURTH SUNDAY OF EASTERTIDE Services at 10.00a.m. and 6.00p.m.

MAY

1st Tuesday St. PHILIP & St. JAMES 9.30a.m. HOLY EUCHARIST
6th FIFTH SUNDAY OF EASTERTIDE Services at 7.45a.m., 10.00a.m. and 6.00p.m.
13th SIXTH SUNDAY OF EASTERTIDE Services at 10.00a.m. and 6.00p.m.
14th Monday St. MATTHIAS, APOSTLE
17th Thursday ASCENSION DAY Services at 10.00a.m. and 6.00p.m.
20th SEVENTH SUNDAY OF EASTERTIDE Services at 10.00a.m. and 6.00p.m.
27th FESTIVAL OF PENTECOST (WHITSUNDAY) Services at 7.45a.m., 10.00a.m. and 6.00p.m.
31st Thursday VISIT OF B.V. MARY TO ELIZABETH

JUNE

2-3 FESTIVAL WEEKEND FRIENDS – FLOWERS – FETE plus ART EXHIBITION
Details in next Bulletin and elsewhere nearer the time.

WEEKDAYS IN LENT

MONDAYS	12 noon	HOLY EUCHARIST
TUESDAYS	12 noon	HOLY EUCHARIST & ADDRESS (followed by LENT LUNCH in the vicarage)
WEDNESDAYS	7.30p.m.	HOLY EUCHARIST & ADDRESS (March 7th & 21st at HOLCOT)
FRIDAYS	7.45a.m.	HOLY EUCHARIST
SATURDAYS	10.00a.m.	HOLY EUCHARIST

FROM THE REGISTERS

HOLY BAPTISM

Sunday 21st January	EVIE ROSE PADDISON	61 The Ashway
Sunday 11th February	JESSICA & LUCY CARTER	41 The Ashway

HOLY BURIAL

Saturday 9th December	JAMES JENNEY	recently at Pytchley Court
Thursday 14th December	FREDERICK JOHN TYRRELL	101 Northampton Road
Thursday 11th January	BETSY ELLEN DENNIS	28 Newlands
Friday 26th January	VALERIE ANN PARKER	38 The Knoll

BRIXWORTH BADMINTON CLUB

After much hard work, the club has recently been awarded both the Sport England clubmark and Badminton England silver club accreditations. In essence, these awards recognise that the club is well managed, a safe environment for junior players and can provide proper facilities for learning the sport to people of all abilities and backgrounds. The accreditation is reviewed annually.

As part of the award the club has introduced junior coaching on Friday nights during school term time. Anyone interested should contact Tony Blackwell on 01788 822697 and anyone wanting to know more about joining the senior club should call Geoff Dawson on 882369 or Philip Imison on 01536 723182.

Red Lion Football Club

At present we are in third place in the Premier table having won five, drawn one & lost four games. Our aim is to finish in the top four, which should enable us to enter the National FA Sunday Cup next season, if things go to plan. We have reached the semi final of the NTFA Goodcliffe Cup & face Harpole in February for a place at Sixfields. No fewer than thirteen players have found the net so far this campaign, with Craig Spraggons & Matt Coleman leading the way with six each.

Ian Bandey

Brixworth Girls Under12's F.C.

The club is currently on the look out for new players to strengthen our squad and enable us to enter the league next season. If you are presently in Year 7 and want to train with us, then come along to the Ashway Playing Field on Saturday mornings from 10:00am or contact me on 882215.

Ian Bandey

DAVENTRY DISTRICT SPORTS AWARDS 2006

In the last Bulletin, we reported that there were 3 Brixworth finalists in different categories for the Annual Daventry District awards which were going to be announced at a ceremony at the end of November 2006.

All the Brixworth finalists were successful: Caitlin McClatchey was awarded Sportswoman of the year.

Jack Rose was awarded Young Sportsman of the year.

Natalie Reay was awarded Young Sportswoman of the year.

Congratulations to all of them.

BRIXWORTH GIRLS U14's FOOTBALL CLUB



Back Row L to R: Sharon Hanson, (Manager/coach) Kate Hanson, Chelsea Lightfoot, Holly Crome, Imogen Aisbett, Louise Styvesent, Amy Whitehouse, Sally Valentine, Jamie Hames (Assist coach)

Front Row L to R: Hannah Richards, Hannah Valentine, Charlotte Reed, Millie Entwistle, Katie Elmore, Lucy Mister, Yuko Tsuda

Brixworth Girls U 14's team is having their best season in their history so far. They are currently six points clear at the top of the league and are through to the NTFA cup final and the County Cup final. To add icing to the cake, they are still in the league cup.

The girls have been together as a team for over 4 years starting out as a 7 a side squad and then progressing to 11 a side 3 seasons ago. Year upon year they have improved and are now being rewarded for their hard work. The club and the parents have encouraged and

supported the girls, as we are currently the only girl's team in the village. Players come mainly from Moulton and Guilsborough schools catchment area but we are always looking for anyone who is interested in joining.

The girls are still without a sponsor so if there is anyone out there who can assist us in any way, we would be very happy to hear from you.

Please contact Sharon Hanson on 882319 for any details.

PRACTICE THE AUTHENTIC MARTIAL ART OF

TAE KWON-DO



BEGINNERS ENROLMENTS

COME ALONG & JOIN ONE OF OUR UTA TAEKWON-DO SCHOOLS AT:

ROADE: The Willison Centre
ST. JAMES: St. James Community Centre
BRIXWORTH: Brixworth CEVC Primary School

Taekwon-Do helps improve
FLEXIBILITY • FITNESS • CONCENTRATION
CONFIDENCE • STAMINA • COORDINATION

ALSO... LIL' DRAGONS CLASSES
Fun & energetic classes for 4 - 6 year old children

Our Lil' Dragons will learn: **SELF DEFENCE**
SAFETY IN THE HOME • FIRST AID
STRANGER DANGER • FIRE SAFETY
999 PHONE SKILLS & more...

CALL NOW TO BOOK A PLACE!

UK ITF

AFFILIATED TO THE UK INTERNATIONAL TAEKWON-DO FEDERATION

NORTHAMPTON TAEKWON-DO SCHOOLS (UTA)

For further info contact
Mr Darrin Bonfield
(Fully qualified 4th Degree Black Belt Instructor. BTC verified and CRB checked)
Tel: 07941 272661

www.northampton-tkd.co.uk

'ALADDIN' AT THE VILLAGE HALL



Pantomime is a peculiarly British form of entertainment. And entertainment is exactly what Brixworth Drama Group delivered recently, over five performances of Aladdin in the village hall.

From the dark opening where villain Abanazer, played as a ham villain by Alec Hodgson, plots world domination to the spectacularly-set finale in the Emperor's palace, there is plenty of fun, humour, set-piece entertainment, improvisation, and even a little drama. We are transported to Widow Twankey's 'High-Speed' laundry in Peking, where the classic dame, played with panache and a great deal of skill by James Skeggs, supervises the work-shy crew of scrubbers. Elaine Musgrove, Heather Pool, Eileen Truby, and Grasshopper the mangle operator, played with increasing confidence by Dale Matthews making his debut, threw the laundry about with enthusiastic abandon. Enter the free spirited son Aladdin, who dreams of riches and the Princess in the palace. When Abanazer tricks Aladdin into finding buried treasure and seals him in a cave, surprise, Aladdin rubs an old lamp and Puff!! - Flash!! - Bang!! - camp genie Mike Culverhouse appears, adding a well-judged comic touch to the role.

The plot thickens. Aladdin meets the Princess, and it's not love, actually, at first sight. However, this Aladdin had a play-like element that allowed Amanda Pickering in the title role and Nikki Roberts as the Princess to grow closer, to the point that when they sing 'Getting to know you' the audience is moved with them. Their relationship carries a script that has some slow parts. Meanwhile there are any number of delightful cameos, Robin Armstrong as the incompetent detective Nick Nick, Amanda Pilgrim as the Emperor's Vizier, and Ian Pilgrim as the yo-yo playing emperor, also making an assured debut.

Then there's the musical theatre. For the first time, the cast was supported by a live band, adding presence to the ensemble dance numbers although unfortunately their big sound masked the chorus singing. This apart, everything worked - from marvellous costumes, excellent make-up work, to great sets and slick dance numbers and effects and

lighting that all worked well, the group overall raised the level again.

Sue I'Anson and Tony Farrow shared the Directorial duties, Tony blowing the dust off his trombone and occasionally hitting the right note. 'Twinkle fingers' Andy Bransby led the band from his keyboard. The lads in the band had a great time and promised future support. Behind the scenery and in front of house, many volunteers and cast members worked like Trojans to keep the audience watered and the production on time. Well done to all.

Although the exact figure is not known, it's estimated that the group raised about £1600 for the chosen charities, Earl Mountbatten Hospice and Helen and Douglas House. The group would like to thank all the 500 who attended or gave through the raffle.

The next production comprises two one act plays, The Allotment, which will feature an all female cast, and Last Panto in Little Grimley, which should continue where last Tango left off.... How about the left one, Margaret? Performances will be on the evenings of 14-16 June.

Robin Pool

**Saxon
blinds**

**SHOWROOM
01604 601888**

**274 Wellingborough Road,
Northampton**

- ✓ Domestic & Commercial
- ✓ Installation & Repairs
- ✓ Internal or External Blinds
- ✓ Free expert Help & Advice
- ✓ Home consultations available
- ✓ Wide choice of systems
- ✓ Very competitive prices
- ✓ Extremely experienced staff
- ✓ 2 year Guarantee

Factory & Office
Unit A, 7 Magee Street,
Northampton
01604 603111
www.saxonblinds.co.uk

**Self - Drive
Mini Digger Hire...**

**SAMEDAY DELIVERY
EASY TO OPERATE
SAFE TO USE**



Ideal for DIY garden and building projects
FREE delivery when you hire a Skip with your Mini Digger



NORTHAMPTON ..01604 549 196
KETTERING01536 381 123
WELLINGBOROUGH ..01933 378 090



www.kerplant.co.uk



00000KER Plant Hannington Grange Farm, Red House Lane, Hannington, Northampton

SPORTS PAGE ***** SPORTS EDITOR: John Blason



BRIXWORTH JUNIOR FOOTBALL CLUB

Brixworth Juniors under 10's run two 7-a-side mini soccer teams, the Lions and the Tigers, in the Northampton and District Youth league (locally known as the John Henry League).

The Lions play in the B league and the Tigers play in the D league. Both teams had a successful first half of the season narrowly missing out on promotion from their respective leagues at Christmas. The Lions are also in the semi-final of the cup and hoping to go all the way to the final at Sixfields in May.

Home games are played at the Ashway playing fields on Saturday mornings and the squads train together at Moulton College on Friday evenings.

New players (boys and girls) are always welcome to join us and anyone interested, should call any of the coaches on the contact numbers below. To qualify to play for the under 10's this season, you need to be under 10 on the 31st August 2006.

Brixworth Juniors F.C. is a F.A. Chartered Standard club run by volunteers.

Under 10's Contacts:

Tony Burwood: 07770 541158

Mike Bridges: 01604 881244

Jon Howarth: 01604 880148

Tony Proctor: 01604 880012



BRIXWORTH UNDER 16'S FOOTBALL CLUB

Our season is continuing very well, having now played fourteen games, won thirteen and the team has 39 points. We are top of the league by three points and have scored sixty one goals, conceding just twelve. With ten games left to play, the team is in a great position to win the league.

Thanks again to Ray Bell and sons for sponsoring our kit.

BRIXWORTH GOLF SOCIETY

2006 proved to be another successful golfing year with high numbers playing at each venue.

The presentation evening was held at Kilworth Springs Golf club and Golfer of the year was Nigel Rylance with Bill Waller as runner up. The Captain's Shield was presented to Gordon Chiverton by Bob Deeming. The George Clapton Memorial trophy was won by Gordon Chiverton and the Tim Moulds Jug was won by Andy Tebbutt.

The annual general meeting will be held on Thursday 22nd March 2007 at 8.00pm at the Sports pavilion, Brixworth. Everyone, new and existing members, are welcome.

Venues for 2007 have been arranged for 13th April at Market Harborough; 8th June at the Northampton Club; 10th August at Whitefields and 6th October at Stoke Albany.

Anyone interested in joining, please ring John Wilson on 01604 880490.

SKIP HIRE

FROM £50 A DAY

2 CU YD

4 CU YD

7 CU YD

12 CU YD

40 CU YD

FOR CONTRACTORS
Also for Industry & DIY

- Drop Ends Available
- Road Permits Obtained
- Registered Waste Carrier
- 2-7 CU. YD. Builders Skips
- 10-12 CU. YD. Industrial Skips
- 15-40 CU. YD. Hook Lift Skips
- Waste Recycling Centres

WWW.KERPLANT.CO.UK
EMAIL: SALES@KERPLANT.CO.UK

NORTHAMPTON
01604 549 195

KETTERING
01536 381 120

DAVENTRY
01327 898 075

WELLINGBOROUGH
01933 378 089

FRIENDLY, RELIABLE & COMPETITIVE SERVICE